

DORCHIME

INSTALLATION & OPERATING MANUAL



EUROSECURE
SECURING HOMES SINCE 2008

EC DECLARATION OF CONFORMITY

DoP N°: EM0038

Applicable Products: ERA - WiFi Chime

ERA-WIFI-CHIME-W

ERA Home Security Ltd

Valiant Way
Wolverhampton
WV9 5GB
United Kingdom

Tel: +44(0) 1922 490 000

Fax: +44(0) 1922 494 420

The products described above are in conformity with the Radio Equipment Directive 2014/53/EU.

Standards: EN 55032:2015+AC 2016(Class B); EN 61000-3-2:2014;
EN 61000-3-3:2013; EN 55024:2010+A1 2015;
EN 301 489-17 V3.1.1(2017-02)
IEC 60950-1:2005 (2nd Edition)+Am 1:2009+Am 2:2013
EN 60950-1:2006 (2nd Edition)+A11:2009+A1:2010+A12:2011+A2:2013
ETSI EN 300 328 V2.1.1(2016-11)

Signed for and on behalf of **ERA Home Security Ltd:**

Ben Penson:
Technical & Quality Director
02/02/2018



ERA

IMPORTANT

PLEASE READ THIS MANUAL CAREFULLY BEFORE OPERATING THE SYSTEM AND RETAIN FOR FUTURE REFERENCE.

All devices, with the exception of the External Siren are suitable for mounting in dry interior locations only.

Any repairs must be carried out by an Authorised Repair Centre. Misuse or attempted repairs to a component part of the product will invalidate the warranty. The photocopying, copying, reproduction, translation to any language, modification, storage in a retrieval system or retransmission, in whole or in part, in any form or by any means, electronic, mechanical or otherwise of this manual, is strictly prohibited without the prior written permission of ERA Home Security.

Disposal and Recycling

Disposal of this product is covered by the Waste Electrical or Electronic Equipment (WEEE) Directive. It should not be disposed of with other household or commercial waste.

At the end of the product's useful life, the packaging and product should be disposed of via a suitable recycling centre. Please contact your local authority or the retailer from where the product was purchased for information on available facilities.

Declaration of Performance

This equipment complies with the essential requirements of the Radio and Telecommunications Terminal Equipment Directive, 1999/5/EC.

Additional Accessories

This system can easily be extended at any time with the range of ERA Wireless Alarm Accessories, for details visit www.eraeverywhere.com or call our Customer Support team on 01642 309575 (local call rate).

TABLE OF CONTENT



1.	Requirements	4
2.	Preparations	4
3.	Pairing Process	5
	3.1. Andoid Users	5
	3.1. Apple iOS Users	6
4.	WiFi Chime Test	8
5.	LED Indicator Status	8
6.	Functions	9
7.	Ringtones	9
	Product Guarantee	10


1. REQUIREMENTS

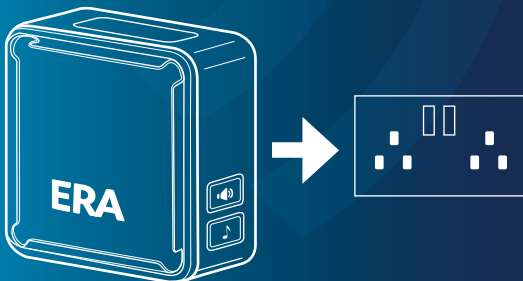
- AC 220V ~ 240V power outlet
- Apple iOS version 10.0 or Android version 5.0 Smartphone or above
- WiFi router (2.4GHz) connected to internet
- DoorCam App installed on Smartphone and registered to an active DoorCam

2. PREPARATIONS

Step 1: Check your WiFi signal on your smartphone in the room you intend to install the Chime. If you do not have a strong WiFi signal, move the Chime closer to the WiFi router

Step 2: Confirm that the power outlet has enough space to plug in the WiFi Chime.

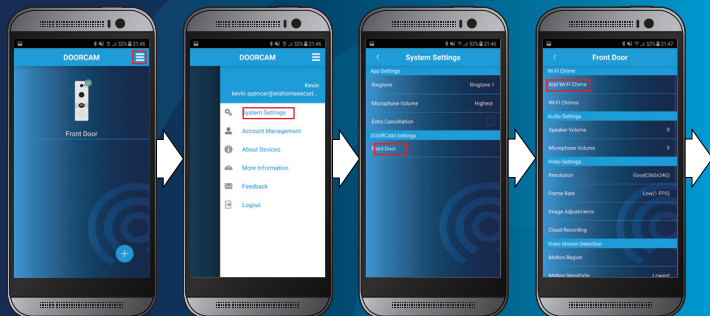
Step 3: Plug the WiFi Chime into the power outlet. Wait about 10 seconds until the LED flashes green and red, then start the pairing process.
(if it doesn't flash green and red, please press [] button for 10 seconds)



3. PAIRING PROCESS

Use DoorCam App to add WiFi Chime

3.1. Android Users

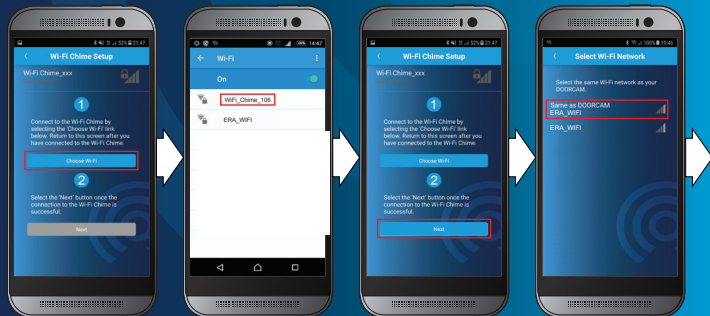


Click on the menu in the upper right corner

Click on 'System Settings'

Select your Doorbell

Click on 'Add WiFi Chime'

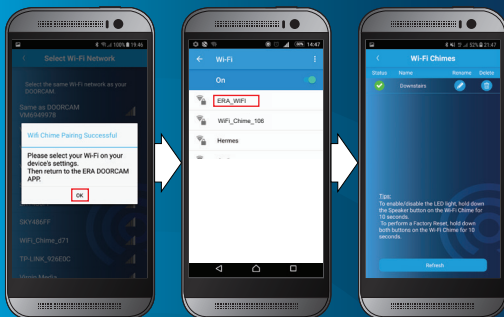


Click on 'Choose WiFi'

Select WiFi Chime SSID, then click the back key to return to the app

Click on 'Next'

Select 'Same as Doorbell Camera'

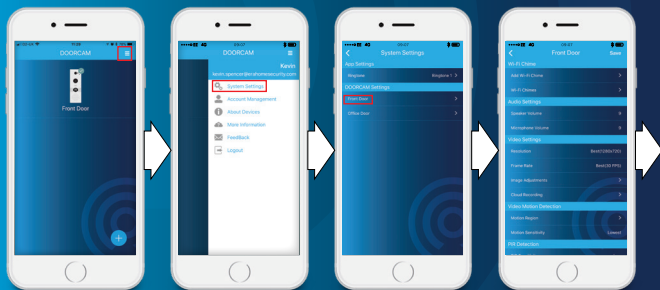


Click on 'OK'

Select Home WiFi router
SSID, then click back key to
return to the app

Your Chime is
now installed

3.2. Apple iOS Users



Click on the menu
in the upper right
corner

Click on
'System Settings'

Select your
doorbell

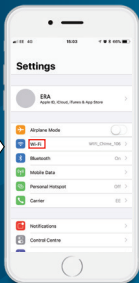
Click on 'Add
WiFi Chime'



Click iPhone home button to go back to Home Screen



Click on Settings



Select WiFi



Select WiFi Chime SSID, then click iPhone home button to go back to Home Screen



Click on 'DoorCam' App



Select 'Same as Doorbell Camera', then click on 'Next' button



Click 'OK'

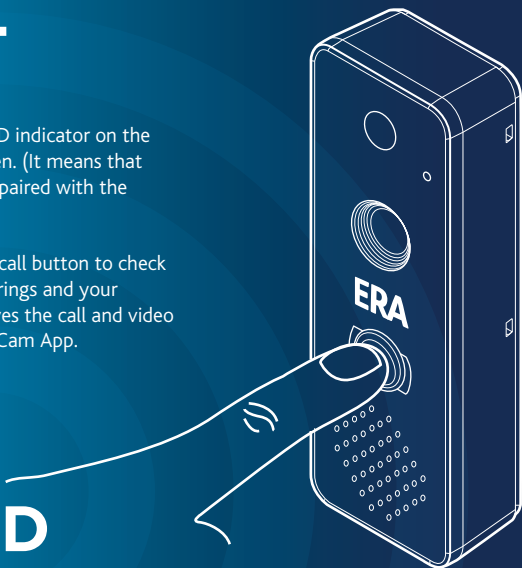


Your Chime is now installed

4. WIFI CHIME TEST

Ensure that the LED indicator on the WiFi Chime is green. (It means that the WiFi Chime is paired with the DoorCam)





Press the doorbell call button to check if the WiFi Chime rings and your Smartphone receives the call and video image in the DoorCam App.



5. LED INDICATOR STATUS

Colour	Status
Flashing Green/Red	Discovery Mode (AP Mode)
Flashing Green (Fast)	Pairing with Doorbell
Solid Green	Paired with Doorbell
Flashing Green (Slow) for 10 Sec.	Doorbell Call Button is pressed, ringtone is playing
Flashing Red (Slow)	Getting IP from WiFi router
Flashing Red (Fast)	Firmware Updating

6. FUNCTIONS

Button Icon	Action	Function
	Short Press	Melody Selection
	Long Press 10 Seconds	Pairing Mode
	Short Press	Volume Control
	Long Press 10 Seconds	Turn LED On and Off
 + 	Long Press 10 Seconds	Reset to Factory Default

7. RINGTONES

There are 16 Built-in Melodies to select from

Ringtone Number	Melodies
1 (Default)	Ding Dong
2	Westminster
3	Ding Dong Ding
4	Tubular 1
5	Orchestra
6	Tubular 2
7	Trumpet
8	Dog Barking
9	Bird
10	Mirage
11	'Pang' from Cymbals
12	SO ME DO
13	Knock
14	Cuckoo
15	Old Phone
16	Buzzer

ERA PRODUCT GUARANTEE

We at ERA firmly believe in the quality of our goods. Our technology achieves outstanding performance and durability and we can therefore offer, in addition to your statutory rights, an additional limited guarantee. In the event of any material defects in any product manufactured by us due to faulty design, materials and/or workmanship, and which arise following correct installation and during normal use in accordance with our instructions, as included in the product packaging, within the period of two years from the date of purchase, we will either repair, provide a replacement, substitute with an equivalent product free of charge from our then current range or refund in full the amount paid for the product at point of purchase.

Conditions

In order to take advantage of our guarantee, you must comply with the following conditions:-

1. This limited guarantee is not transferable and is extended only to, and is solely or the benefit of, the original purchaser of the product. Please retain your dated sales invoice as proof of purchase and forward this to us if you wish to make a claim under this guarantee.
2. Products must be installed, used and maintained in accordance with our instructions otherwise the guarantee will be invalidated.
3. The product must not be damaged or modified in any way nor must it have been subjected to any unauthorised repairs.

Exclusions

This guarantee does not cover:-

1. Periodic maintenance, repair and replacement of parts due to fair wear and tear.
2. Abuse or misuse, including but not solely limited to the failure to use this product for its normal purposes or in accordance with ERA's instructions on usage and maintenance.
3. Failure of the product arising from incorrect installation or use not consistent with the instructions supplied and the cost of any removal or installation of products.
4. Accidents, Acts of God, lightning, water, fire, public disturbances, improper ventilation, voltage fluctuations or any cause beyond the control of ERA (Force Majeure).
5. Unauthorised modifications carried out to the product.
6. Damage caused by incorrect/improper use of supplied batteries.
7. Alteration to, deletion, removal or illegibility of the Serial Number as shown on the Product Label.
8. Consumables: any damages so caused by the use of batteries not supplied by ERA.
9. Repair or attempted repairing by bodies who are not ERA authorised repairers.
10. Neglect.
11. The loss of any stored data on your product.

This guarantee is in addition to your contractual and statutory rights and does not affect your statutory rights.

*Terms and conditions apply.



Customer Helpline:

01642 309575

www.euro-secure.com



EUROSECURE

SECURING HOMES SINCE 2008