



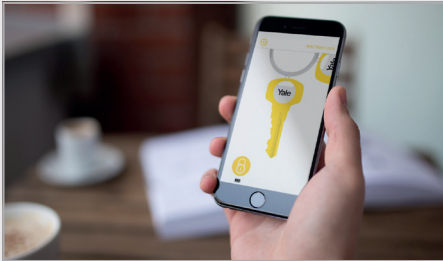
Conexis[®] L1.

The Secure, Keyless
Smart Door Lock



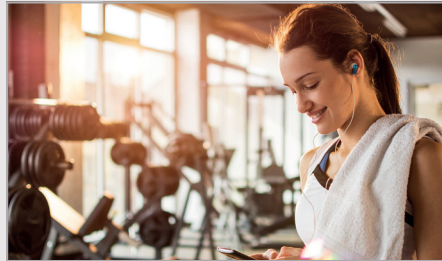
The smarter way to protect your home.

Open the door to your world with the Conexis® L1 Smart Door Lock. The Smart Door Lock that puts you fully in control giving you the freedom to secure your home without the need for a key.



Say Goodbye to Keys

With Conexis® L1 your smartphone is now your key. There's no need to leave keys under the mat or worry about the hassle of replacing them if they go missing.



Stay in Control

Send mobile keys to family and friends. Choose to give access for a few weeks or hours - It's up to you. You can even revoke mobile keys, key cards, key tags and phone tags in an instant. 5 Mobile Keys are included - Additional Mobile Keys can be purchased via the app.



Know Who Comes and Goes

Have peace of mind knowing your loved ones are home safely. When using mobile keys you can receive a notification informing you they are home.



The Yale Lock App

Configure, control and unlock your Smart Door Lock from your smartphone via our secure Bluetooth app. Give family and friends access by sending them a mobile key to their smartphone and keep track of who comes and goes via the app.

Twist & Go - To open the lock with the app simply touch the lock to wake up the Bluetooth function and twist your phone 90 degrees.



Compatibility

The Conexis® L1 works with most multi-point locks on the market.



Simple to Fit

The Conexis® L1 Smart Door Lock has been engineered for easy installation.

It only takes a screwdriver, smartphone and a few minutes to install.

Ways to open your door



Key Card



Key Tag



Phone Tag (Sold Separately)